

WECAMP SAN SEBASTIÁN PRESS



WE CAMP

The emblematic Monte Igueldo, in San Sebastian, the place chosen for the new wecamp.

We transfer the hotel experience to the campsite in a concept of design, comfort and sustainability in the open air.

**WE CAMP MORE
THAN JUST A
CAMPSITE**



SAN SEBASTIAN IN A BEAUTIFUL SPOT BETWEEN THE MOUNTAIN AND THE SEA

San Sebastian, the town bathed by the emblematic La Concha beach, is the unusual city surrounded by wild hills that lead to real natural oases.

Among them, Monte Igueldo, at an altitude of over two hundred metres, is the path chosen by wecamp for a new generation of campsites, with minimal environmental impact, which meets the standards of quality and comfort of a hotel.

Also known as Donostia, this town is the place where green blends with the blue of the sea to welcome all visitors with a spectacular gastronomic, cultural and sporting offer.

On Mount Igueldo, just 5km from the historic center of San Sebastian, is the place where the new wecamp campsite is located. A space surrounded by wild hills, where the respect for biodiversity and the use of renewable energies are the basis of its infrastructure.

wecamp San Sebastian is the first city establishment that allows you to stay in a natural oasis at the top of the mountain. If you go down to the city you reach its picturesque bayfront promenade and world-class restaurants run by innovative chefs. In the cobblestoned Old Town, luxury boutiques coexist with "pintxos" bars paired with local wines and bite-sized regional specialties.



COMMON AREAS DESIGNED FOR THOSE LOOKING FOR MORE THAN JUST A CAMPSITE

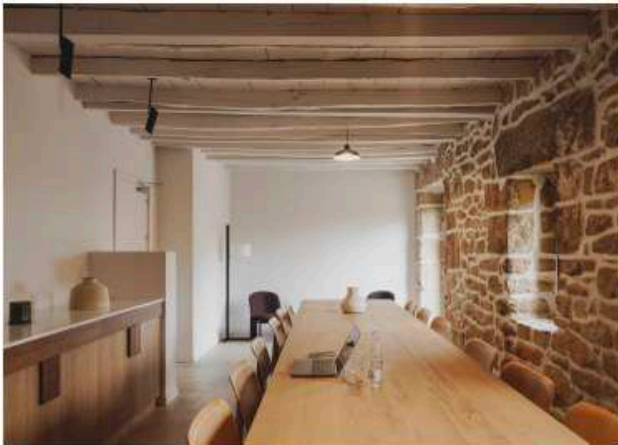
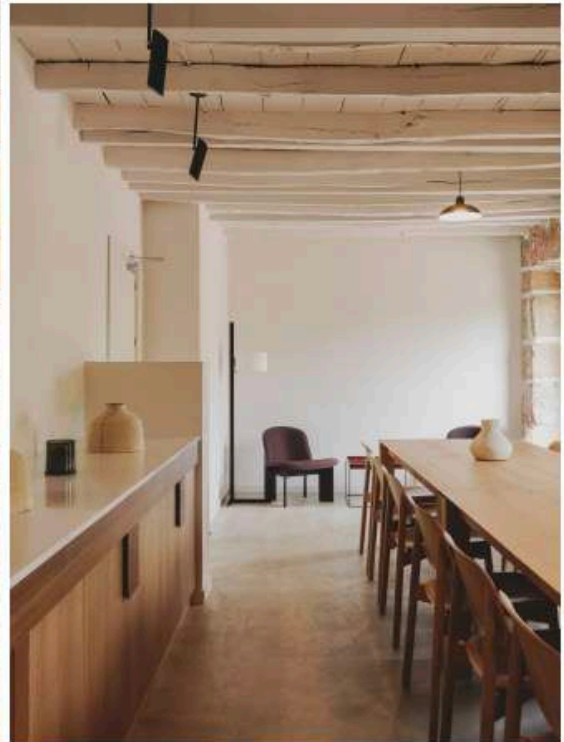
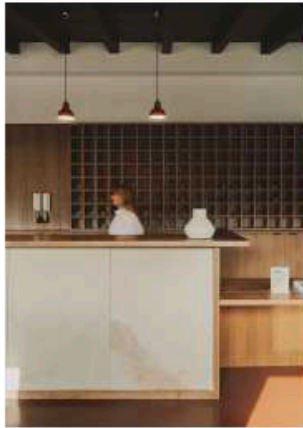
The common areas, with a respectful and environmentally friendly infrastructure, have been designed for those who are looking for a complete stay that combines wellbeing with a local experience.

Among them, the **restaurant** is the gastronomic space that offers a selection of local proposals, in which seafood or mountain recipes merge to offer a zero kilometer experience.

The **Bar** is the area that houses a terrace overlooking the valley in which to enjoy the outdoors, and another covered space to enjoy at any time of year.

Between sea and mountain, the **swimming pool** rests under the native Cantabrian vegetation. A bathing area adapted by a wooden pavement that leads to the solarium. Designed for the fun of the whole family or the tranquility of those looking for a tailor-made trip.

To extend the gastronomic experience of the area, wecamp offers a picnic area with picnic tables, water fountain and barbecue. A space specially designed for glamping tents and for the most authentic travelers traveling by motorhome.



With an eye on the **UN's 2030 Sustainable Development Goals**, it seeks to contribute responsibly and respectfully to the planet. To this end, it is committed to green and energy-efficient buildings and actively collaborates in the protection and recovery of native flora and fauna.

This has been possible **thanks to the experience of energy efficiency specialists** who have collaborated in optimizing the use of local resources, reducing the carbon footprint to a minimum and creating a pleasant and versatile environment.

In this thread, a selective recycling system has been implemented throughout the site plus scalable and adaptable energy efficiency program.

In addition, the slogan "**As green as possible**" is strengthened by the use of renewable energies in most of its facilities, which are powered by aerothermal systems supported by solar panels. In addition, we have photovoltaic solar energy equipment in some accommodations (Mobilhome type) and recycling points throughout the campsite.

Investing in eco-technology, promoting sustainable experiences, encouraging responsible consumption, recognising diversity and supporting local producers are just some of the things that wecamp does.

On the other hand, the campsite's lighting system uses LED bulbs to reduce energy consumption. A system has been set up for the use of rainwater for irrigation and other water saving other water-saving elements, such as low-consumption toilets and aerators at terminal points.

Minimal intervention is expressed with wecamp's landscaping project, which protects the biodiversity of the habitat with the installation of 2057 plant species.

Finally, as part of its commitment to sustainable mobility, has a fleet of electric buggies and a charging station exclusively for them.

DESIGN AND VERSATILITY IN TUNE WITH THE BEAUTY OF THE DESTINATION

All accommodations include microwave, refrigerator, crockery, towels, sheets and ventilation system.

Glamping Family +.

The Glamping family+ can accommodate up to 6 people. This type of accommodation stands out for its spacious atmosphere with a loft, private bathroom and equipped kitchen. In addition, this space houses other relaxation areas such as the sofa or outdoor table that will ensure comfort.

Glamping Comfort.

A tent for 4 with two double beds in the main room and loft. It has a private bathroom and equipped kitchen, sofa and outdoor table on the terrace. A space that stands out for its comfort, spaciousness and design, which will make you connect globally.

Glamping Couple.

A tent for two set in nature; discreet and comfortable. Located in the quiet Adults Only area where you can relax undisturbed.

Bell Tent Y Bell Tent +.

The perfect accommodation for outdoor adventure. A round base glamping tent with simple styling and comfort for two or three people. A tent covered in natural fibres, it has a light, spacious, versatile and comfortable infrastructure thanks to its altitude and luminosity. In addition, its ventilation capacity and permeability adapts to inclement weather.

Mobil Homes.

Ideal for families or groups with a maximum capacity of 5 people. These modules integrated into the landscape are the safe bet to connect with the outdoors, thanks to their fully equipped outdoor terrace, and maintain comfort with a spacious interior space with all the comforts. 2 of the Mobile Home accommodations are adapted for people with reduced mobility.

Pitches.

The pitches are for those who move around in a caravan or their own tent. A flat, stable and quiet space where accessibility to services and common areas is guaranteed. We have services for this type of accommodation, such as Camper Clean, toilets with sinks and washing facilities, and electricity and water supply.



Local experiences that immerse you in the day-to-day life of your destination

wecamp promotes the authentic experience of San Sebastian through the Local Guide of its app. The digital space where it is possible to book activities and local experiences, sustainable and not overcrowded, for the unique experience of belonging to the place you are visiting.

GASTRONOMIC PARADISE

San Sebastian is known for its rich gastronomy, especially for its "pintxos" and haute cuisine restaurants. So, taking a gastronomic tour through the **taverns** of the old town is the best option that will bring you closer to the cuisine of the north.

DONOSTIA IS CULTURE

Festivals, museums, galleries and sculptures, San Sebastian was designated **European Capital of Culture in 2016**. A walk through this city allows you to admire the works of **Eduardo Chillida and Jorge Oteiza**, which are integrated into the city establishing a dialogue with its natural environment. Some of the visits that can introduce the traveler to the culture of the area are the San Telmo Museum, the Basilica of Santa Maria del Coro and the Koldo Mitxelena Cultural Center.

FRENCH BASQUE COUNTRY GETAWAY

The towns and villages of the **French Basque Country** are the perfect complement to your getaway. The most emblematic ones are Hondarribia, Getaria, Zarautz, Zumaia and Mutriku, noted for their historical heritage, chapels and monuments.

THE MECCA OF SURFING

Surfing is one of the great protagonists of Donostia. That is why surfers from all over the world come to **Zurriola**, the beach of San Sebastian to enjoy the waves and the young atmosphere. For a calmer atmosphere, **Ondarreta** is also one of the best places in Spain to practice this sport.

AQUATIC ACTIVITIES

Kayaking is a popular sporting activity in San Sebastian, which is recurrent in the bay of La Concha. It is also common to practice paddle surfing, as a preliminary to learning to surf



SERVICIOS

Actividades:

Actividades diarias gratuitas

Experiencias

Local Guide

App

Restauración

Commodities:

Common areas:

Pet friendly with kid's pets.

Kids Club

Supermarket

Swimming pool

Car parking

Bicycle parking

Reception

Recycling point Buggies - hotel service

PARTNERS

Partners involved:

Architecture: Estudio RRIO and Tematic Arquitectura

Landscaping Project: Chloris, Valentina Greselin

Photography: Coke Bartrina & Enric Badrinas

WECAMP SAN SEBASTIÁN

Padre Orkolaga Ibilbidea, 69, 20008 Donostia, Gipuzkoa

T. (+34) 900 056 003

<https://wecamp.net/en/locations/san-sebastian>



For more press information:

WECAMP

Elvira Ràfols

Head of Branding and Communication

elvira@wecamp.net

Tel. 699 925 569

<https://wecamp.net/en/press-room>

[DOWNLOAD THE PHOTOS](#)